

IRT1

Infrared Pulse Transmitter



General description

The IRT1 is an hybrid circuit that allows to realize an infrared barrier when utilized with an infrared pulse detector (IRD1).

It shows stable electric characteristics thanks to the "Thick film hybrid" technology.

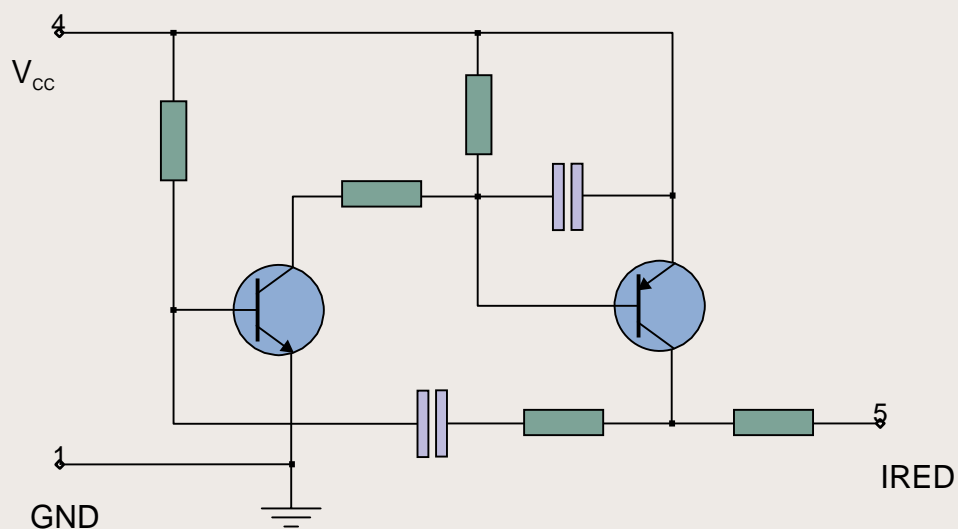
Features

- High RFI Immunity
- SIL Package

Applications

- Residential and commercial security systems
- Automatic doors opening systems

BLOCK DIAGRAM



Electrical Characteristics

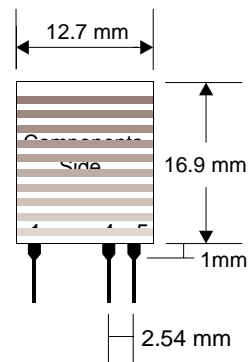
Ta = 25°C unless otherwise specified

CHARACTERISTICS		MIN	TYP	MAX	UNIT
V _{CC}	Supply Voltage	8	9	10	VDC
I _S	Supply Current		35		mA
F _{IR}	Infrared Pulse Frequency	300	400		Hz
T _p	Pulse Width		40		µsec
T _{OP}	Operating Temperature Range	-20		+80	°C

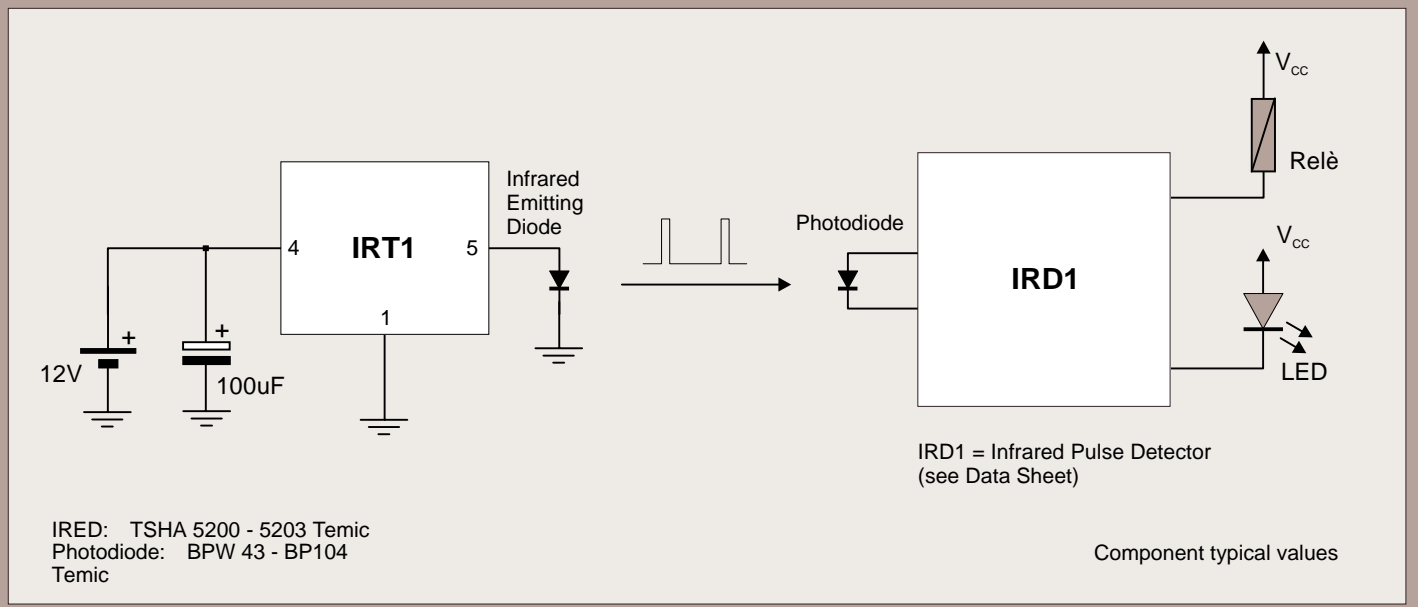
Pin Description

1	GND	Ground
4	Vcc	Supply Voltage
5	IRED	Infrared Emitting Diode

Mechanical Dimensions



TYPICAL APPLICATION



IRED: TSHA 5200 - 5203 Temic
 Photodiode: BPW 43 - BP104
 Temic