

Photo:

Standard type of this sensor:



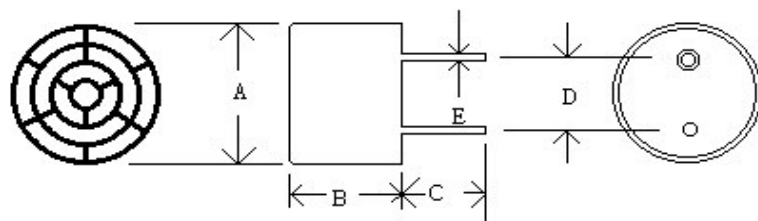
J25T/R-16F	Flower case with aluminum case
J25T/R-16W	White mesh with aluminum case
J25T/R-16B	Black mesh with aluminum case
J25T/R-16P	Plastic black case

Specification

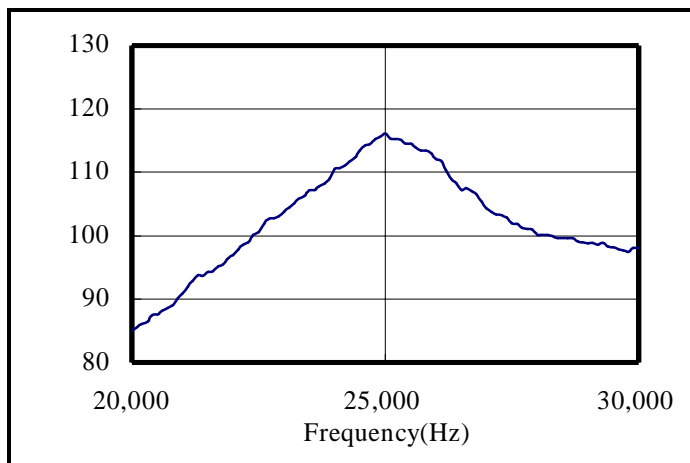
PARTS NUMBER	J25T-16	J25R-16
Center frequency (kHz)	25.0±1.0kHz	25.0±1.0kHz
Sound pressure level (0dB=0.0002μbar)	≥ 112dB	-----
Sensitivity (0dB vs 1V/μbar)	-----	≥ -65dB
Bandwidth (kHz)	4.0/106dB	3.5/-71dB
Beam angle -6dB	70°	
Driving voltage (RMS)	30V	
Working temperature (°C)	-30~80	

Dimension(J25T/R-16P)

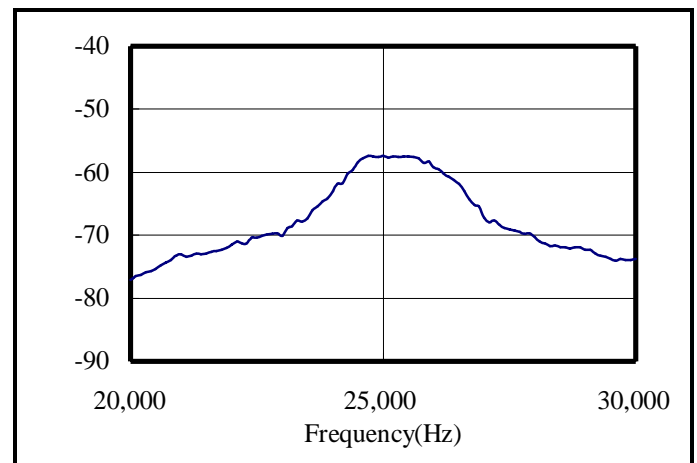
- A=16.1±0.3
- B=12.0±0.4
- C= 9.5±1.0
- D=10.0±0.5
- E=1.0±0.1
- (UNIT: mm)



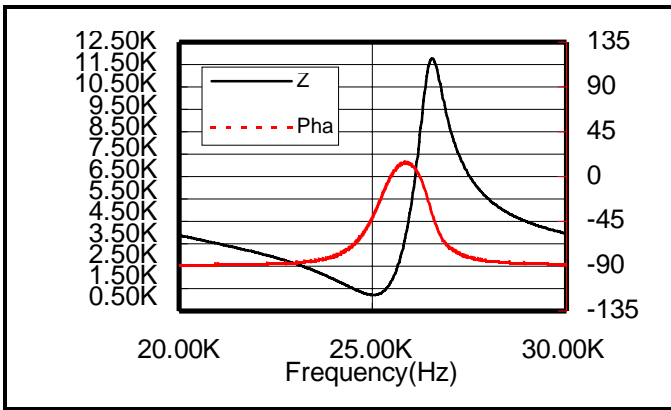
Transmitter impedance



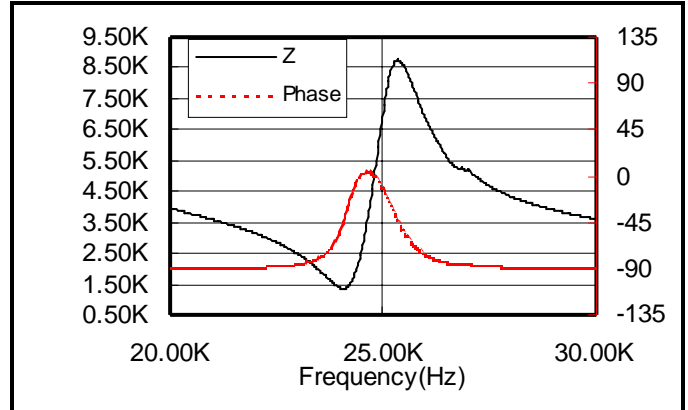
Receiver impedance



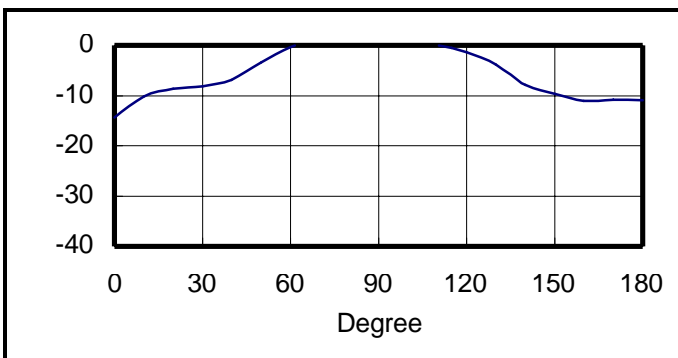
Transmitter impedance



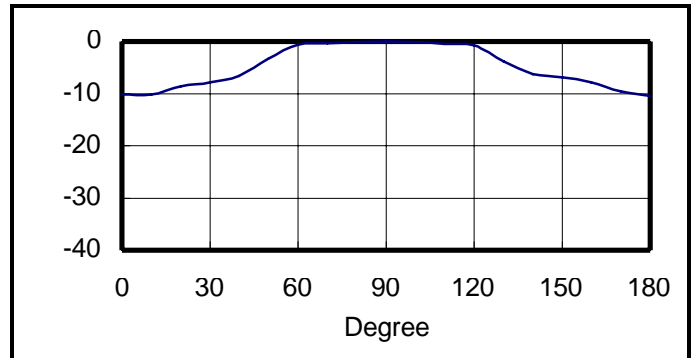
Receiver impedance



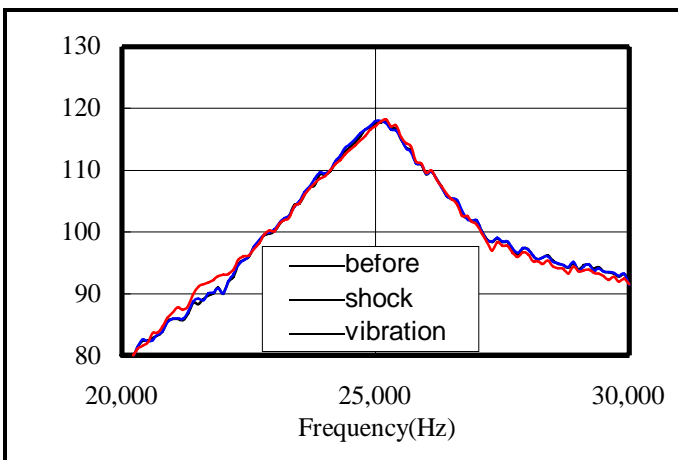
Beam angle of transmitter



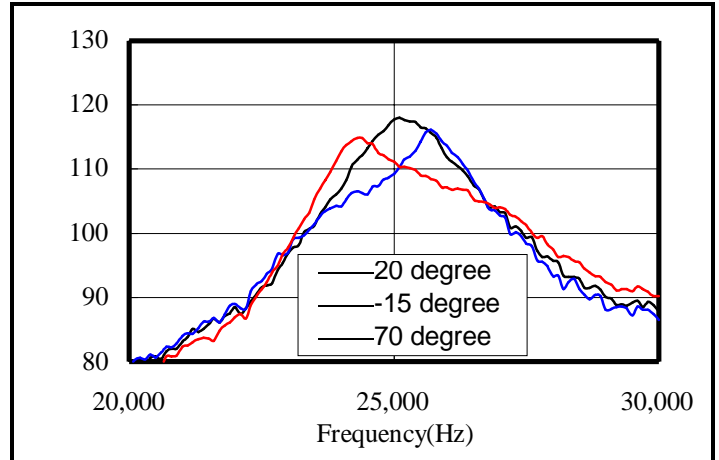
Beam angle of receiver



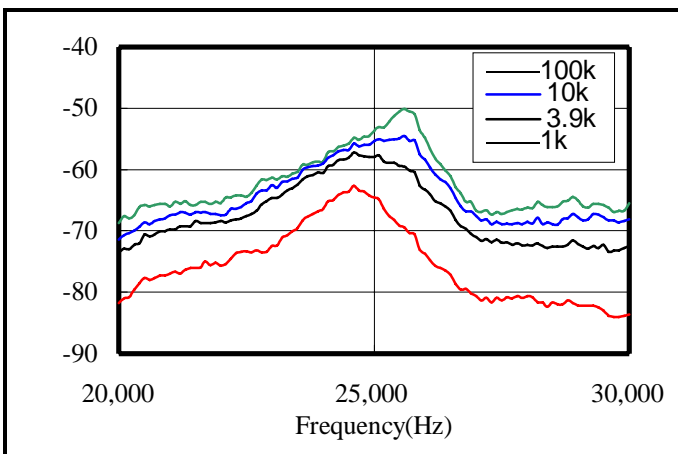
Environment test



Temperature test



Sensitivity change with load resistance



S.P.L. change with driving voltage

