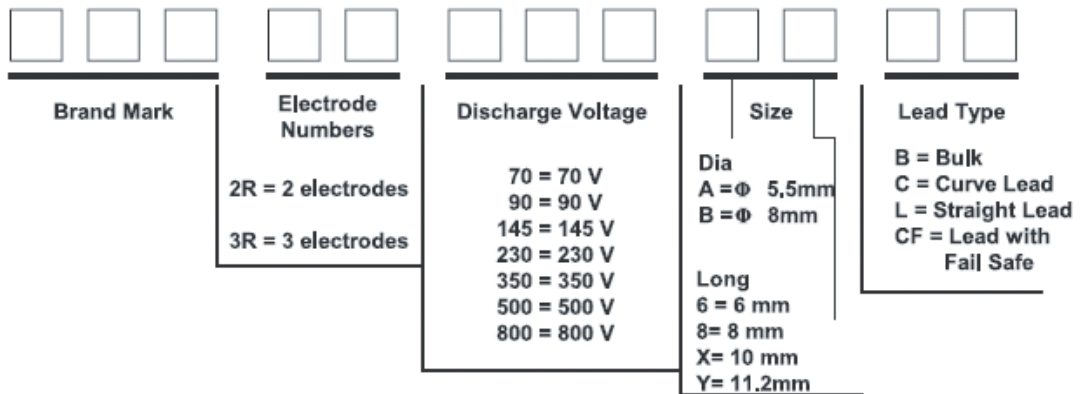


II.CERAMIC GAS DISCHARGE TUBE

How To Order





2M5S Mini Series

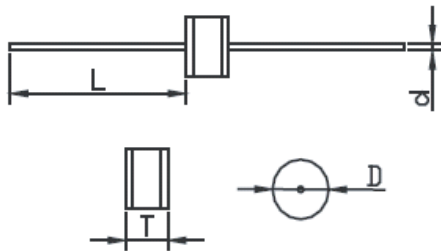
ACPA-2R Ø5.5mm ,6mm long

Model Name	DC Breakdown Voltage (V)	Maximum Impulse Breakdown Voltage (V)		Maximum Impulse Discharge Current (KA)		Nom. Alternating Discharge Current (A)		Impulse Life (10/1000µs) (100A) times	DC Holdover Voltage (V)	Minimum Insulation Resistance (GΩ)	Maximum Capacitance (pf)
		100V/µs	100V/µs	1000V/µs	1 time	10times	50Hz,1sec				
2R-70	70 ±20%	700	800	10	5	5	20	300	52	1	1
2R-90	90 ±20%	600	700						52	1	1
2R-120	120 ±15%	600	700						52	1	1
2R-130	130 ±15%	600	700						52	1	1
2R-150	150 ±15%	600	700						52	1	1
2R-180	180 ±15%	600	700						80	1	1
2R-230	230 ±15%	600	700						80	1	1
2R-250	250 ±15%	600	700						80	1	1
2R-300	300 ±15%	700	900						150	1	1
2R-350	350 ±15%	700	900						150	1	1
2R-400	400 ±15%	800	1000						150	1	1
2R-470	470 ±15%	1000	1200						150	1	1
2R-600	600 ±20%	1300	1500						150	1	1
2R-800	800 ±20%	1500	1700						150	1	1

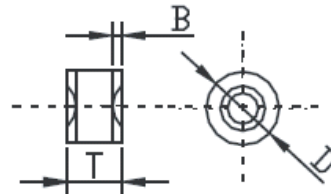
Note1 : DC Breakdown Voltage Measuring Voltage

■ 70-90 V	50 V
■ 120-400 V	100 V
■ 470-800 V	250 V

L TYPE



B TYPE



Unit: mm

Item	Dimensions	
	Spec.	Tolerance
D	5.5	±0.3
T	6.0	±0.3
B	1.1	±0.4
d	0.8	±0.05
L	28	Max.

2N8S Standards Series

ACPA-2R Ø8mm ,6mm long

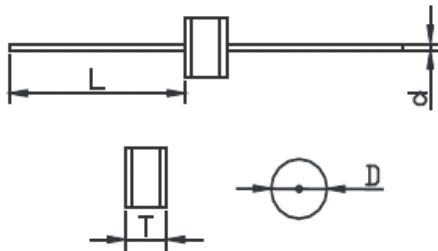


Model Name	DC Breakdown Voltage (V)	Maximum Impulse Breakdown Voltage (V)		Maximum Impulse Discharge Current (KA)		Nom. Alternating Discharge Current (A)		Impulse Life (10/1000µs) (100A)	DC Holdover Voltage (V)	Minimum Insulation Resistance (GΩ)	Maximum Capacitance (pf)
		100V/µs	1000V/µs	1 time	10 times	50Hz, 1sec	Single 9cycles				
2R-70	70 ±20%	500	600	15	10	10	65	500	< 150ms	10	1.5
2R-90	90 ±20%	500	600								
2R-120	120 ±15%	500	700								
2R-130	130 ±15%	500	700								
2R-145	145 ±15%	500	700								
2R-180	180 ±15%	500	700								
2R-230	230 ±15%	500	700								
2R-250	250 ±15%	500	700								
2R-300	300 ±15%	700	900								
2R-350	350 ±15%	700	900								
2R-400	400 ±15%	800	1000								
2R-470	470 ±15%	900	1000								
2R-600	600 ±20%	1100	1400	10	5	10	65	300	150	10	1.5
2R-800	800 ±20%	1300	1700								

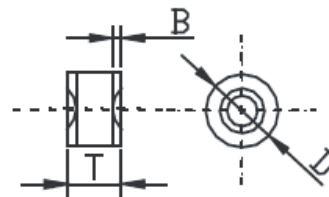
Note1 : DC Breakdown Voltage Measuring Voltage

■ 70-90 V	50 V
■ 120-400 V	100 V
■ 470-800 V	250 V

L TYPE



B TYPE



Unit: mm

Item	Dimensions	
	Spec.	Tolerance
D	8.0	±0.3
T	6.0	±0.3
B	1.1	±0.4
d	1.0	±0.05
	0.8	±0.05
L	28	Max.



2N8U High Surge Series

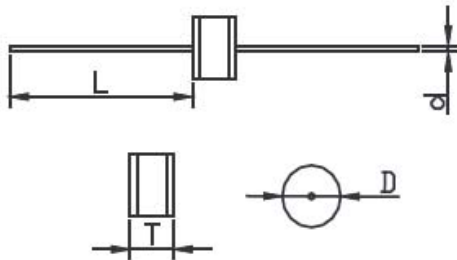
ACPA-2R Ø8mm ,6mm long

Model Name	DC Breakdown Voltage	Maximum Impulse Breakdown Voltage		Maximum Impulse Discharge Current (8/20 μs)		Nom. Alternating Discharge Current		Impulse Life (10/1000μs)	DC Holdover Voltage	Minimum Insulation Resistance	Maximum Capacitance
	(V)	(V)	(V)	(KA)	(KA)	(A)	(A)	(100A)	(V)	(GΩ)	(pf)
	100V/s	100V/μs	1000V/μs	1 time	10 times	50Hz, 1sec	Single 9cycles	times	<150ms	Note1	1MHz
2R-70	70 ±20%	500	600	20	15	20	65	500	52	10	1.5
2R-90	90 ±20%	500	600						52	10	1.5
2R-120	120 ±15%	500	700						52	10	1.5
2R-130	130 ±15%	500	700						52	10	1.5
2R-145	145 ±15%	500	700						52	10	1.5
2R-180	180 ±15%	500	700						80	10	1.5
2R-230	230 ±15%	500	700						80	10	1.5
2R-250	250 ±15%	500	700						80	10	1.5
2R-300	300 ±15%	700	900						150	10	1.5
2R-350	350 ±15%	700	900						150	10	1.5
2R-400	400 ±15%	800	1000						150	10	1.5
2R-470	470 ±15%	900	1000						150	10	1.5

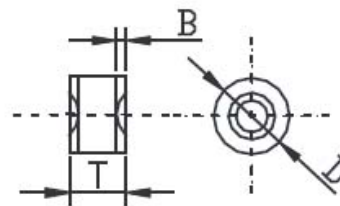
Note 1 : DC Breakdown Voltage Measuring Voltage

- 70-90 V 50 V
- 120-400 V 100 V

L TYPE



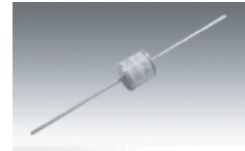
B TYPE



Unit: mm

Item	Dimensions	
	Spec.	Tolerance
D	8.0	±0.3
T	6.0	±0.3
B	1,1	±0,4
d	1.0	±0.05
L	28	Max.

2L8H High Voltage Series



ACPA-2R \varnothing 8mm ,8mm long

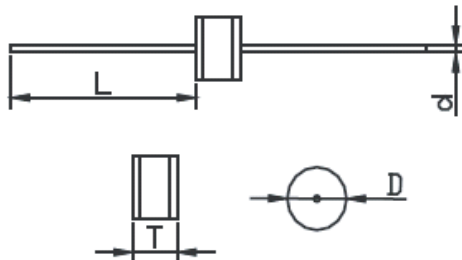
Model Name	DC Breakdown Voltage (V)	Maximum Impulse Breakdown Voltage (V)		Maximum Impulse Discharge Current (8/20 μ s) (KA)		Nom. Alternating Discharge Current (A)		Impulse Life (10/1000 μ s) (100A) times	Minimum Insulation Resistance (G Ω) Note1	Maximum Capacitance (pf) 1MHz		
		100V/ μ s	100V/ μ s	1000V/ μ s	1 time	10 times	50Hz,1sec				Single 9cycles	
2R-600	600 \pm 15%	1000	1100	10	5	10	65	500	10	1.5		
2R-800	800 \pm 15%	1100	1200					500			10	1.5
2R-1000	1000 \pm 20%	1300	1400					300				
2R-1400	1400 \pm 20%	2100	2200	2.5	2.5	2.5	5	10	10	1.5		
2R-1600	1600 \pm 20%	2300	2400					10				
2R-2000	2000 \pm 20%	2700	2800					10				
2R-2500	2500 \pm 20%	3500	3600					10				
2R-2700	2700 \pm 20%	3700	3800					300*				
2R-3000	3000 \pm 20%	4100	4200					10				

*Measured with an 8/20s waveform, 100A

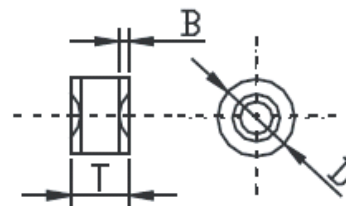
Note1 : DC Breakdown Voltage Measuring Voltage

■ 600-1000V	DC 250 V
■ 1400-2000V	DC 500 V
■ 2500-3000V	DC 1000 V

L TYPE



B TYPE



Unit: mm

Item	Dimensions	
	Spec.	Tolerance
D	8.0	\pm 0.3
T	8.0	+0.6, -0.1
B	1.1	\pm 0.4
d	1.0	\pm 0.05
	0.8	\pm 0.05
L	28	Max.



3N8S Standard Series

ACPA-3R \varnothing 8mm ,10mm long

Model Name	DC Breakdown Voltage (V)	Maximum Impulse Breakdown Voltage (V)		Maximum Impulse Discharge Current (KA)		Nom. Alternating Discharge Current (A)		Impulse Life (10/1000 μ s) (400A) times	DC Holdover Voltage (V) < 150ms	Minimum Insulation Resistance (G Ω) Note1	Maximum Capacitance (pf) 1MHz
		100V/ μ s	1000V/ μ s	1 time	10 times	50Hz, 1sec	Single 9cycles				
3R-75	75 \pm 20%	600	700	20	10	10	130	300	52	10	2
3R-90	90 \pm 20%	600	700								
3R-145	145 \pm 20%	500	700								
3R-200	200 \pm 20%	500	700								
3R-230	230 \pm 20%	600	700								
3R-350	350 \pm 20%	700	900								
3R-400	400 \pm 20%	800	1000								
3R-420	420 \pm 20%	800	1000								
3R-470	470 \pm 20%	800	1000								
3R-600	600 \pm 20%	1200	1500								

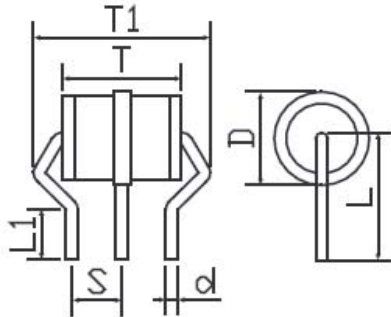
Note1 : DC Breakdown Voltage

- 70-90 V
- 145-400 V
- 470-600 V

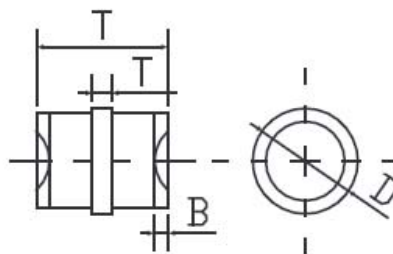
Measuring Voltage

- 50 V
- 100 V
- 250 V

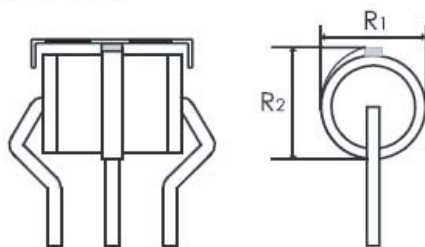
C TYPE



B TYPE



CF TYPE



Unit: mm

Item	Dimensions	
	Spec.	Tolerance
D	8.0	\pm 0.2
T	10.0	\pm 0.3
T1	13.4	\pm 0.4
T2	1.5	\pm 0.2
B	1.4	\pm 0.3
L	11.0	\pm 0.5
L1	4.5	\pm 1.5
R1	8.1	\pm 0.3
R2	9.8	\pm 0.4
S	4.4	\pm 0.3
d	1.0	\pm 0.05

SMD SERIES



ACPA-2S \varnothing 6mm ,4.2mm long

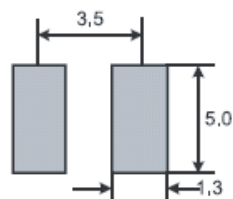
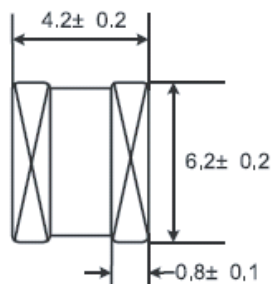
Model Name	DC Breakdown Voltage (V)	Maximum Impulse Breakdown Voltage (V)		Maximum Impulse Discharge Current (8/20 μ s) (KA)		Nom. Alternating Discharge Current (A)		Impulse Life (10/1000 μ s) (100A) times	DC Holdover Voltage (V)	Minimum Insulation Resistance (G Ω)	Maximum Capacitance (pf)
		100V/ μ s	100V/ μ s	1000V/ μ s	1 time	10 times	50Hz, 1sec				
	100V/s	100V/ μ s	1000V/ μ s	1 time	10 times	50Hz, 1sec	Single 9cycles	<150ms	Note1	1MHz	
2R-70	70 \pm 20%	600	700	10	5	5	15	500	52	1	1
2R-90	90 \pm 20%	600	700						52	1	1
2R-145	145 \pm 20%	500	700						52	1	1
2R-230	230 \pm 20%	450	550						135	1	1
2R-250	250 \pm 20%	450	550						135	1	1
2R-300	300 \pm 20%	500	600						135	1	1
2R-350	350 \pm 20%	500	600						135	1	1
2R-400	400 \pm 20%	600	700						135	1	1
2R-470	470 \pm 20%	700	800						135	1	1

Note1 : DC Breakdown Voltage

- 70-90V
- 145-400V
- 470-600V

Measuring Voltage

- 50 V
- 100 V
- 250 V



Recommended Pad Size