

- Integral 4A Fuse
- Status Indicating LED
- UL, CSA, and CE

Series X4 dry contact output modules were developed to provide a device with the reliability of a solid state relay and the efficiency of a Reed relay.

GENERAL SPECIFICATIONS

Operating Temperature Range	-30 to +80°C
Isolation Voltage	1000 Vrms
Capacitance Input to Output	8 pF
Package Color	Black

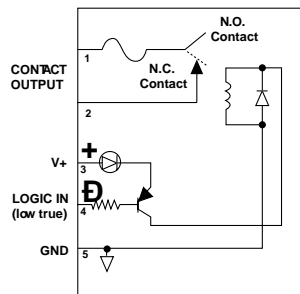
INPUT SPECIFICATIONS

	X40DC5R
Nominal Input Voltage	5 Vdc
Min. Input Voltage @ pin 3	4.5 Vdc
Max. Input Voltage @ pin 3	5.5 Vdc
Must Turn Off Voltage	1.0 Vdc
Typical Input Current	1.3 mA _{dc}
Max. Input Current	2.2 mA _{dc}
Nominal Input Resistance	2 Kohm
Typical V+ Supply Current	50 mA _{dc}

OUTPUT SPECIFICATIONS

Nominal line voltage	5 Vdc/ Vrms
Max. Line Voltage	100 Vdc/125 Vrms
Min. Line Voltage	0 Vdc/ Vrms
Max. Off-State Leakage Current	0 mA _{dc}
Max. On-State Current	1 A, 30 W _{dc} , Resistive 62.5 VA Load
Min. On-State Current	0 mA
Max. One Second Surge	2.5 A _{peak}
Peak On-State Voltage	0.25 V _{dc}
Max. Turn-On Time	2 ms
Max. Turn-Off Time	1 ms
X4 Fuse rating	4A fast-acting

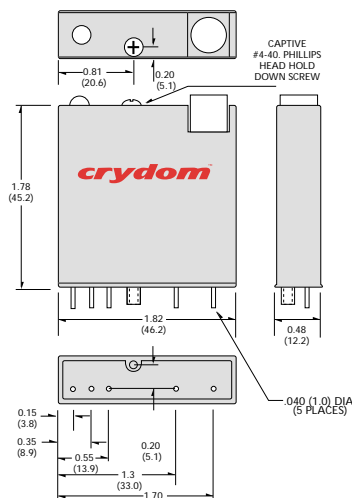
X40DC5R / X40DC5R5



OPTIONS:

X40DC5R
Form A, SPST-NO

X40DC5R5
Form B, SPST-NC



©2003 CRYDOM CORP Specifications subject to change without notice.

For recommended applications and more information contact:

USA: Sales Support (877) 502-5500 Tech Support (877) 702-7700 FAX (619) 710-8540
Crydom Corp, 2320 Paseo de las Americas, Ste. 201, San Diego, CA 92154

Email: sales@crydom.com **WEB SITE:** http://www.crydom.com

UK: +44 (0)1202 365070 • **FAX** +44 (0)1202 365090 Crydom International Ltd., 7 Cobham Road, Ferndown Industrial Estate, Ferndown, Dorset BH21 7PE, **Email:** intsales@crydom.com.

GERMANY: +49 (0)180 3000 506

