

## Installation Kit for frequency-control lifts WDGAS58E with end hollow shaft encoder



- Easy installation on all motor shafts
  - Flexible attachment possibilities
  - Space-saving
  - TTL, HTL output
  - Threads: M8, M10, M12, M16 und M20
- [www.wachendorff.de/wdgas58e-engl](http://www.wachendorff.de/wdgas58e-engl)

The following installation kits are available for fitting the encoder to a frequency controlled lift. Every installation kit consists:  
 1 x Encoder, 1 x with 15 m ready-made shielded cable, 1 x shaft adapter

### Mechanical Data

#### Housing

- Flange: Aluminium
- Housing: Aluminium, powder coated
- Torque Support:
  - 1. Spring plate Incl. 1 spring plate WDGDS10001
  - Compensation: axial: max. 1,5 mm
  - radial: max. 0,1 mm
- Operating speed: 6.000 rpm

#### Hollow shaft

- Material: stainless steel
- Diameter: 10
- Load on shaft end: max. 80 N radial
- max. 60 N axial
- Starting torque: approx. 1,6 Ncm at ambient temperature
- Attachment: permanently attached clamping ring

#### Bearings

- Type: 2 precision ball bearings
- Service life: 10<sup>9</sup> revs. at 100% of full rated shaft load
- 10<sup>10</sup> revs. at 40%
- 10<sup>11</sup> revs. at 20%

#### Weight:

- Connections: SH8: radial connector, 8 pin

#### Protection rating:

- IP65

#### Operating temperature:

- 20... +80°C, 1Vss: -10... +70°C

#### Storage temperature:

- 30... +80°C

#### Encoder-Order No.:

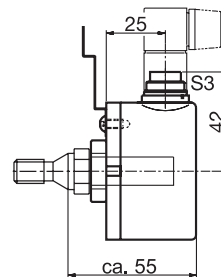
- WDG58E-YYYY-ABN-H24-SH8
- YYYY: with 1024, 2048, 4096 PPR
- 3 channels, A, B and zero marker pulse N
- H24: 10 - 30 VDC HTL power supply
- SH8: radial connector, 8 pin

#### WDG58E-YYYY-ABN-R05-SH8

- YYYY: with 1024, 2048, 4096 PPR
- 6 channels, A, B and zero marker pulse N
- 5 VDC TTL power supply with inv. output circuit
- SH8: radial connector, 8 pin

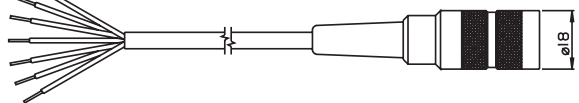
YYYY: Please specify required PPR: 1024, 2048 oder 4096

### Installation Kit WDGAS58E:



### Cable:

The cable is 15m in length and is shielded, however the shield is not connected to the connector housing. With a mated connector, the encoder meets protection class IP40.

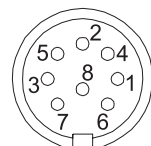


The cable has a connection as follows:

Function	Colour
Positive	brown
Negative	white
A	green
A inv.	red
B	yellow
B inv.	black
N	gray
N inv.	violet
Shield:	cable braiding
Order No.:	KDSH84015

### Pin identification SH8

Function	Pin HTL	Pin TTL
Positive	2	2
Negative	1	1
A	3	3
A inv.	-	6
B	4	4
B inv.	-	7
N	5	5
N inv.	-	8



The view of the soldered side of the connector corresponds to the view of the pin arrangement on the encoder.

**Shaft adapters**


Note:

XX: Please insert the code corresponding to the required shaft adapter:

Shaft adapter 10/M8: 08

Shaft adapter 10/M10: 10

Shaft adapter 10/M12: 12

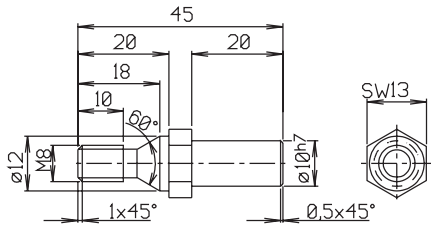
Shaft adapter 10/M16: 16

Shaft adapter 10/M20: 20

YYYY: Please specify required PPR: 1024, 2048 or 4096

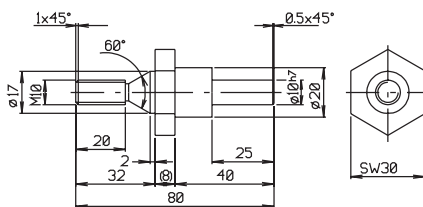
**Shaft adapters:**

The shaft adapters are screwed into an appropriate thread on the lift.



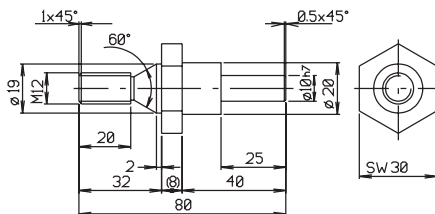
Shaft adapter M8

Order No.: WDGWA10M08



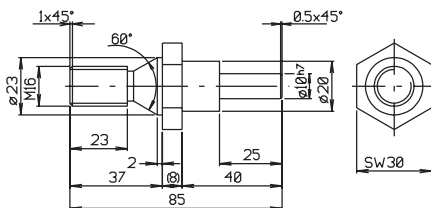
Shaft adapter M10

Order No.: WDGWA10M10



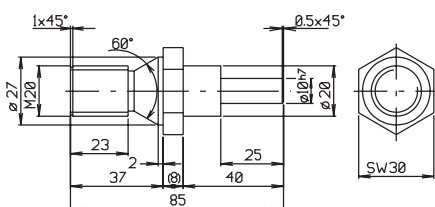
Shaft adapter M12

Order No.: WDGWA10M12



Shaft adapter M16

Order No.: WDGWA10M16


**Ordering Information WDGAS58E:**

Description:	Order No.:
Installation Kit 10-30 VDC HTL comprising: - WDG58E-YYYY-ABN-H24-SH8 - YYYY: with 1024, 2048, 4096 PPR - 3 channels, A, B and zero marker pulse N - H24: 10 - 30 VDC power supply - SH8: radial connector, 8 pin - KDSH84015: 15 m ready-made shielded cable - XX: Shaft adapter: 08, 10, 12, 16 or 20	WDGAS58EYYYYH24XX
Installation Kit 5 VDC TTL, RS422 comprising: - WDG58E-YYYY-ABN-R05-SH8 - YYYY: with 1024, 2048, 4096 PPR - 6 channels, A, B and zero marker pulse N - R05: 5 VDC TTL power supply with inv. output circuit - SH8: radial connector, 8 pin - KDSH84015: 15 m ready-made shielded cable - XX: Shaft adapter: 08, 10, 12, 16 or 20	WDGAS58EYYYYR05XX