

Encoder WDG 58V



Especially for food and beverage industry

- EHEDG: Tested hygienic design
 - Ecolab: Certificate on resistance to cleaning and disinfection agents
 - Clamping flange
 - High protection rating IP69K
 - Radial shaft sealing ring with no dead-room (PTFE)
 - With control output
 - Optional: -40°C ... +80°C
- www.wachendorff.de/wdg58v-engl

Application field

Food production, food processing machinery, filling, packaging.

Available PPR up to 4096

Mechanical Data

Housing

- Clamping flange: stainless steel, V4A
- Housing: stainless steel, V4A

Shaft

- Material: stainless steel, V4A
- Load on shaft end: max. 100 N radial, max. 100 N axial
- Starting torque: approx. 1 Ncm at ambient temperature

Bearings

- Type: 2 precision ball bearings
- Service life: 10⁹ revs. at 100% of full rated shaft load, 10¹⁰ revs. at 40%, 10¹¹ revs. at 20%

Operating speed: 3.600 rpm

Weight: approx. 600 g

Connections: cable outlet (TPE)

Protection rating: IP69K
(EN 60529)

Operating temperature: -20... +80°C

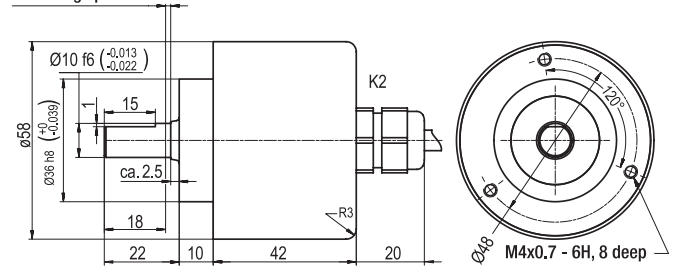
Storage temperature: -30... +80°C

Electrical Data

Power supply	Output circuit	Key	Output circuit	Key
10-30 VDC	HTL	G24	HTL, inv.	I24
5 VDC	TTL	G05	RS422, TTL comp.	I05
5-30 VDC	HTL	H30	HTL, inv.	R30
10-30 VDC	-	-	RS422, TTL comp.	245

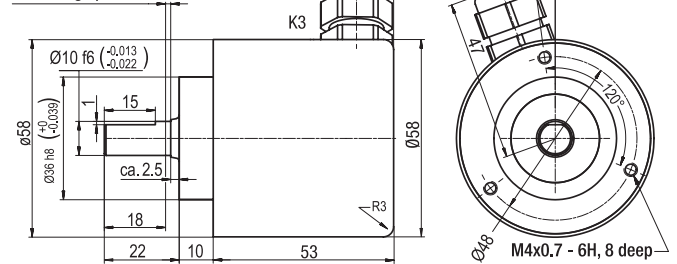
Cable connection K2

Minimum distance of 1.5 to sealing lip



Cable connection K3

Minimum distance of 1.5 to sealing lip



Options:
Low-temperature:

The encoder WDG 58V with the output switches G24, I24, G05, I05 and 245 is also available with the extended temperature range -40°C...+80°C (measured at the flange). When ordering please add the suffix code - ACA.

Cable length:

The encoder WDG 58V can be supplied with more than 2 m cable. Please extend the standard order code with a three figure number, specifying the cable length in decimetres.

All dimensional specifications in mm.

Further technical information on www.wachendorff.de/gtd
 Matching accessories on www.wachendorff.de/acs

Ordering information:

Output circuit: G24 = 10-30 VDC, HTL G05 = 5 VDC, TTL H30 = 5-30 VDC, HTL	Output circuit inv.: I24 = 10-30 VDC, HTL I05 = 5 VDC, RS422 TTL comp. R30 = 5-30 VDC, HTL 245 = 10-30 VDC, RS422 TTL comp.	Electrical connections: Cable: K2 = axial, 2 m, shield not connected (standard) K3 = radial, 2 m, shield not connected (standard) Please note the connection configuration under "General technical data", Page 122
Channels: AB, ABN		Options: Empty = without option Low-temperature -40°C...+80°C = ACA Cable length = in decimetres
Pulses per revolution: 2, 10, 15, 20, 24, 36, 40, 48, 50, 60, 64, 72, 87, 90, 100, 120, 125, 127, 128, 150, 160, 180, 200, 216, 240, 250, 254, 256, 300, 314, 320, 360, 400, 500, 512, 571, 600, 625, 720, 750, 768, 800, 810, 900, 1000, 1024, 1200, 1250, 1270, 1440, 1500, 1800, 2000, 2048, 2400, 2500, 3000, 3600, 4000, 4096. Other PPR's on request		
Order No.: Example <input type="text" value="WDG 58V"/> <input type="text" value="500"/> <input type="text" value="ABN"/> <input type="text" value="G24"/> <input type="text" value="K3"/> <input type="text"/>		
Your encoder <input type="text" value="WDG 58V"/> <input type="text"/> <input type="text"/> <input type="text"/> <input type="text"/> <input type="text"/>		