

Photo:

Standard type of this sensor:



J40T/R-10W	White mesh with aluminum case
J40T/R-10B	Black mesh with aluminum case
J40T/R-10P	Plastic black case

Specification:

PARTS NUMBER	J40T-10	J40R-10
Center frequency (kHz)	40.0±1.0kHz	40.0±1.0kHz
Sound pressure level (0dB=0.0002μbar)	≥ 112dB	-----
Sensitivity (0dB vs 1V/μbar)	-----	≥ -69dB
Bandwidth (kHz)	4.0/105dB	2.0/-73dB
Beam angle -6dB	80°	
Driving voltage (RMS)	20V	
Working temperature (°C)	-30~80	

Dimension(J40T/R-10P)

A=9.8±0.2

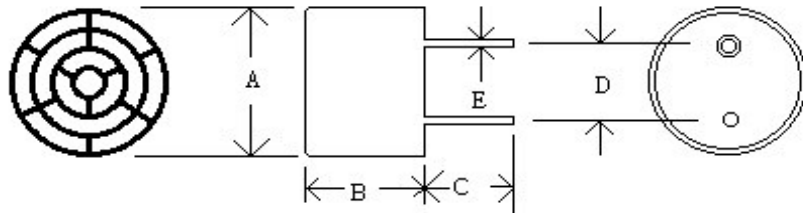
B=6.8±0.4

C=6.9±0.8

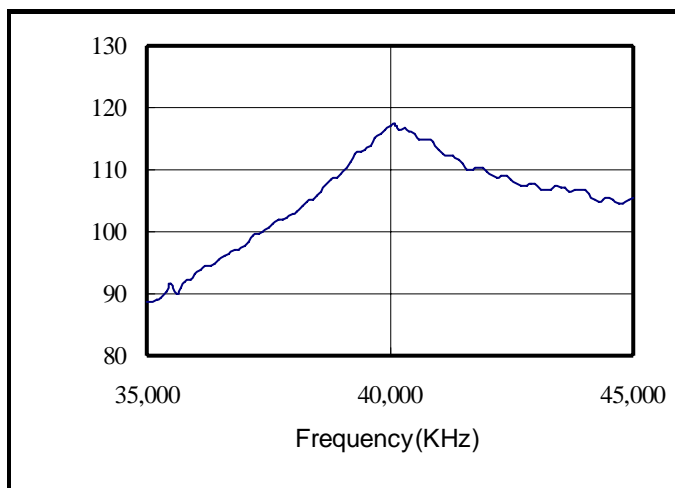
D=5.0±0.2

E=0.7±0.1

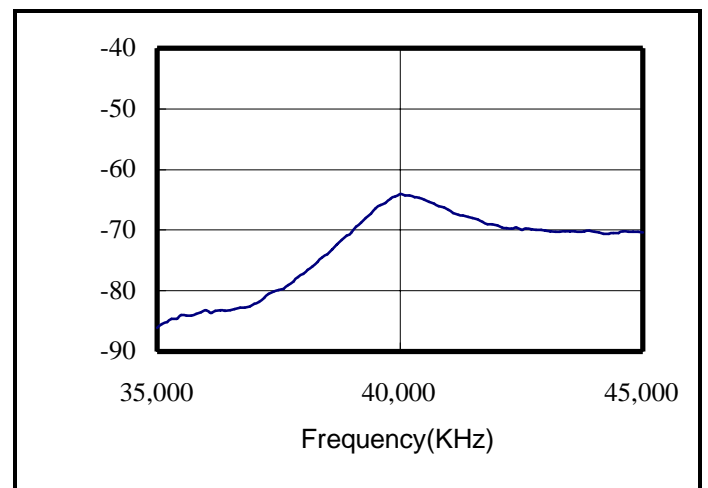
(UNIT: mm)



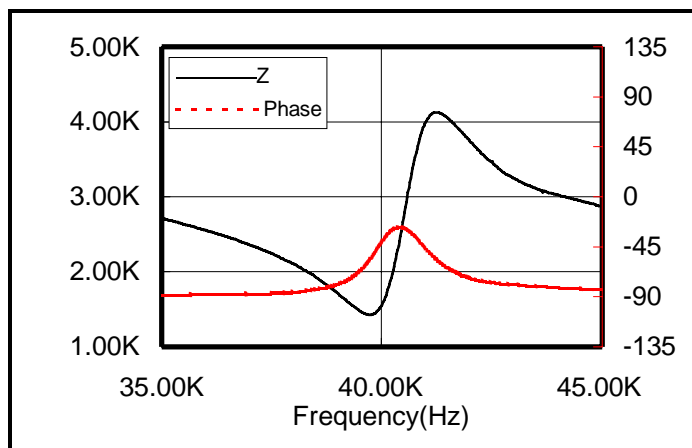
Sound pressure level



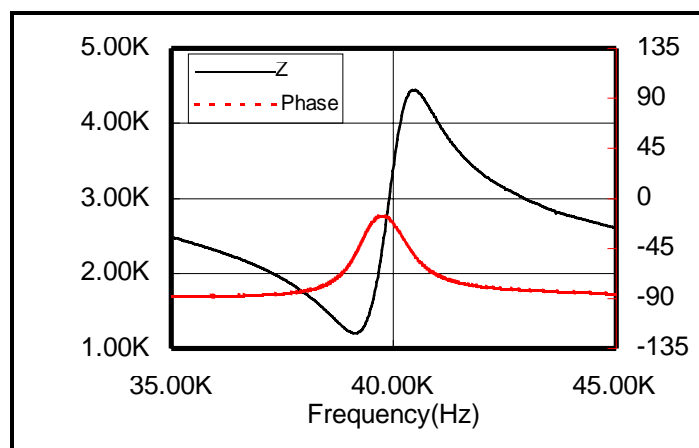
Sensitivity



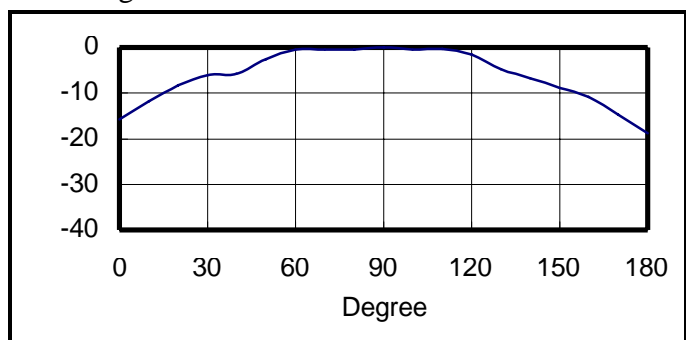
Transmitter impedance



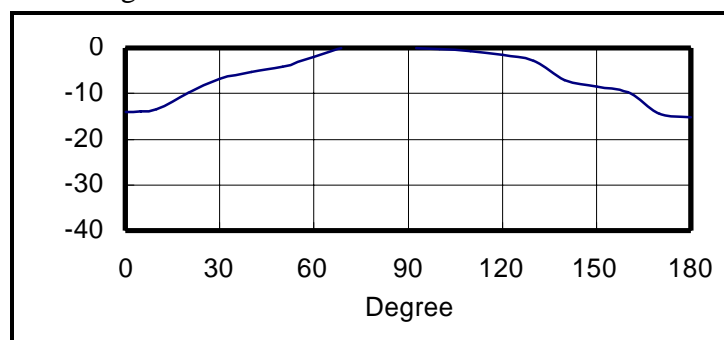
Receiver impedance



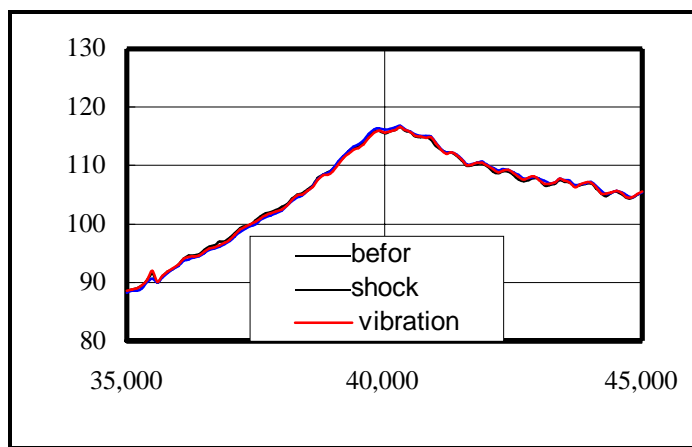
Beam angle of transmitter



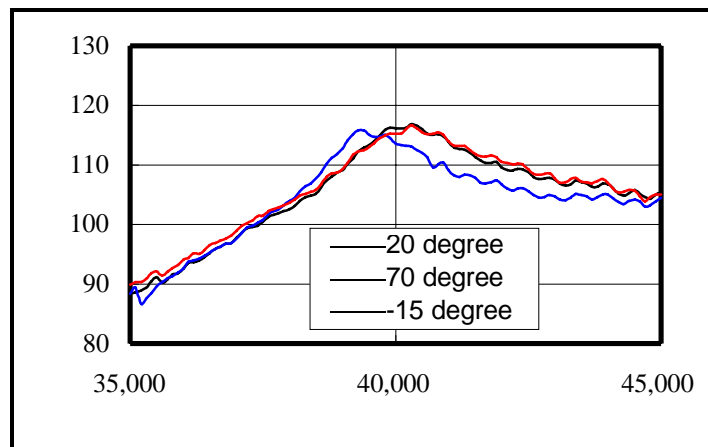
Beam angle of receiver



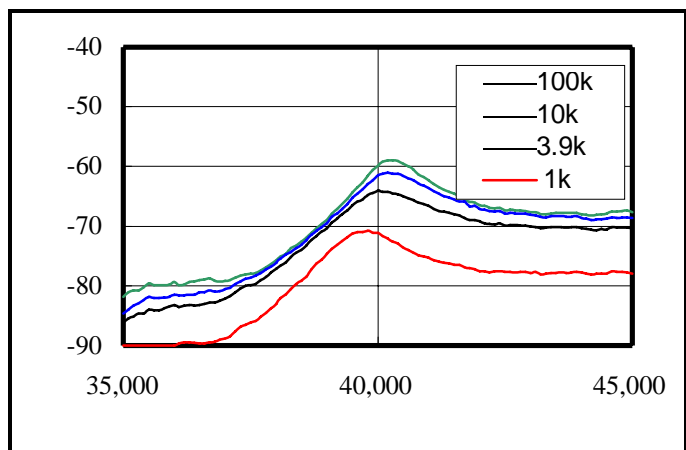
Environment test



Temperature test



Sensitivity change with load impedance



S.P.L. change with driving voltage

