

## Encoder WDG 58T



**Available ex-stock**

- Rugged standard -industrial encoder
  - Protection to IP50, shaft sealed to IP54
  - Highest mechanical and electrical safety
- [www.wachendorff.de/wdg58t-engl](http://www.wachendorff.de/wdg58t-engl)

### Application field

Electric motors, scales, printing machines, drives, textile machines, production lines, test machines, engineering, machine builders.

**Available PPR** 360, 500, 1024

### Mechanical Data

#### Housing

- Clamping flange: Aluminium
- Housing: Aluminium
- Cam mounting: pitch  $\varnothing$  69 mm

#### Shaft

- Material: stainless steel
- Load on shaft end: max. 220 N radial, max. 120 N axial
- Starting torque: approx. 1 Ncm at ambient temperature

#### Bearings

- Type: 2 precision ball bearings
- Service life: 10<sup>9</sup> revs. at 100% of full rated shaft load  
10<sup>10</sup> revs. at 40%  
10<sup>11</sup> revs. at 20%

Operating speed: 8.000 rpm

Weight: approx. 250 g

Connections: radial cable, 1 m, shield not connected

Protection rating: IP50, shaft sealed to IP54 (EN 60529)

Operating temperature: -10... +70°C

Storage temperature: -30... +80°C

### Electrical Data

Power supply	Output circuit	Key
5-30 VDC	HTL, inv.	R30

Further information can be found under "General technical data", Page 122

### Ordering information:

Channels: ABN

Pulses per revolution:  
360, 500, 1024

#### Order No.:

Example

WDG 58T

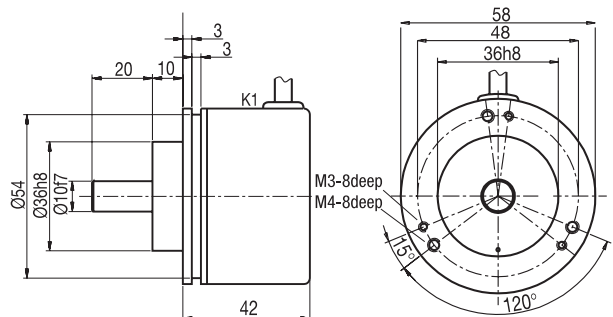
500

ABN

R30

K1

### Cable connection K1



All dimensional specifications in mm.

Further technical information on [www.wachendorff.de/gtd](http://www.wachendorff.de/gtd)  
 Matching accessories on [www.wachendorff.de/acs](http://www.wachendorff.de/acs)