

90085

POWER MONITORING DYNAMOMETER

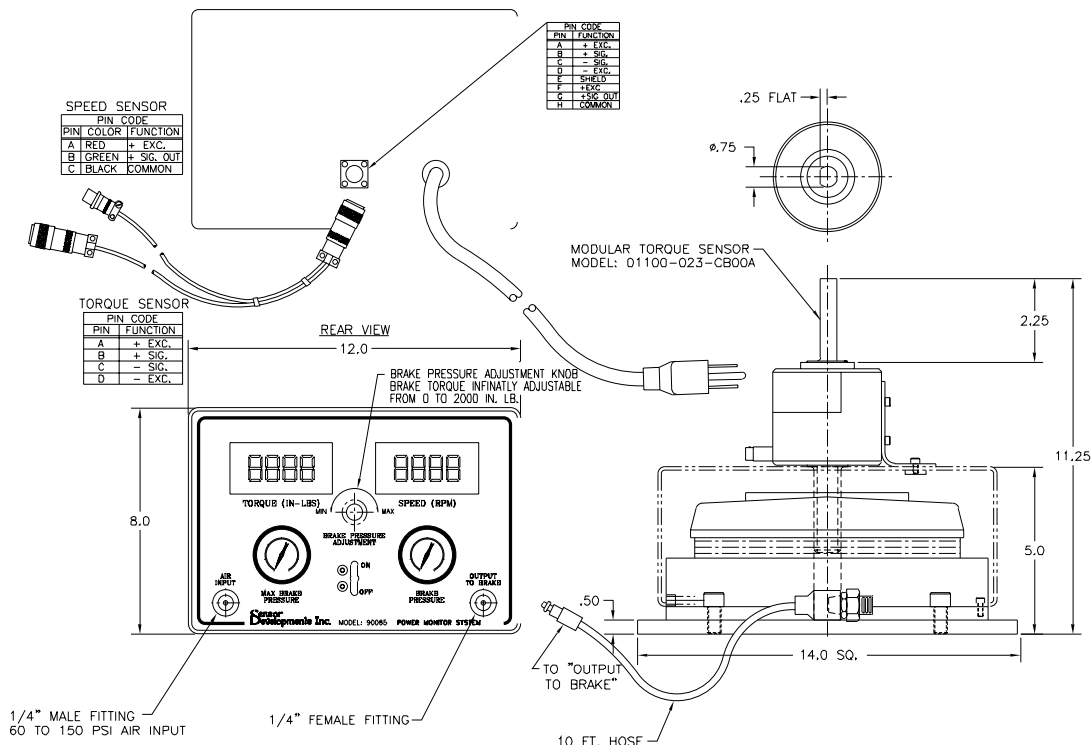
Model 90085 is designed to measure machine tool output. This model acquires the necessary torque and speed data needed to calculate the horsepower of the machine tool under test conditions. It is a portable, self-contained data acquisition and monitoring system consisting of three major components: a pneumatic brake assembly, a torque and speed transducer, and the control and display module.



SPECIFICATIONS

Capacities..... 500 to 10000 in-lbs.
 Overload capacity..... 150% of F.S.
 Output at F.S. load 2.0mV/V nominal
 Non-linearity..... 0.10% of F.S.
 Hysteresis..... 0.10% of F.S.
 Zero balance..... 1.00% of F.S.
 Repeatability..... 0.10% of F.S.
 Compensated temperature..... 70 to 170°F
 Useable temperature..... -65 to +250°F
 Temperature effect on zero 0.002% of F.S./°F
 Temperature effect on span 0.002% of Rdg./°F
 Bridge resistance..... 350 Ohms
 Excitation voltage, maximum..... 20 Vdc

Calibrated to NIST standards



DWG



ORDER TOLL FREE 1-888-SENSOR-1