

M-12 Series LVDTs

The M-12 Series layer wound LVDT offers premium LVDT performance at standard LVDT pricing.

The M-12 series LVDT is wound on a ribless bobbin providing the smooth transfer function required for the most demanding materials testing and position feedback applications.

Precision distribution, tapered layer windings provide excellent stroke to length ratio, without sacrificing sensor linearity.

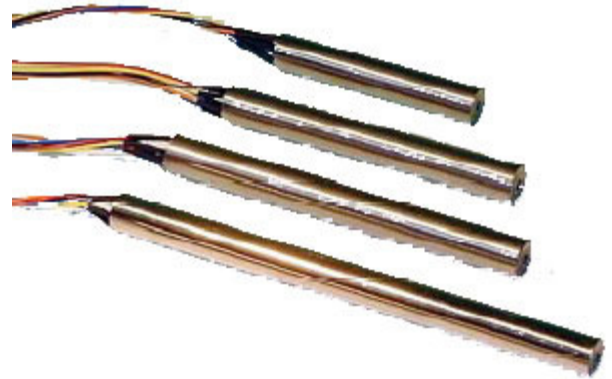
A constant sum of the secondaries, throughout the linear range, insures compatibility with ratiometric temperature compensation signal conditioning schemes.

The new M-12 series coil design has been optimized to provide the best possible temperature coefficient of sensitivity, while maintaining suitability for operation with extended cable lengths.

A seamless 400 series stainless steel case provides magnetic shielding for the noisiest electrical environments.

Vacuum coil impregnation and encapsulation ensure long term stability in the most rigorous, high vibration applications.

Available ranges are from ± 5 mm to ± 150 mm.



SPECIFICATIONS

Excitation	3.0 Volts (RMS) @ 2.5 kHz
Linearity	± 0.25 % Maximum
Null Voltage	0.5% Maximum of F.R.O.

FEATURES

- Excellent Stroke to Length Ratio
- Smooth Transfer Function
- Constant Sum of Secondaries
- Typical T/C ≤ 150 PPM/Degree C at 2.5 to 5.0 kHz
- Shielded Stainless Steel Case
- +/- 10 to +/- 100 mm Strokes

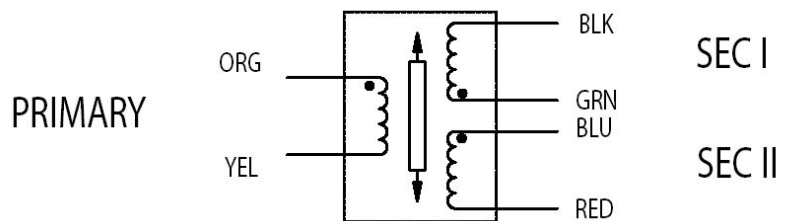
APPLICATIONS

- Materials Testing Extensometers
- Cylinder Position Feedback
- Roller Gap Positioning
- Absolute X-Y Stage Position
- Automotive Suspension Testing
- Hydraulic Spool Valve Position Feedback
- Flight Simulators
- Aircraft Flight Control Feedback

OPTIONS

- Metric Core Thread
- 5.0 kHz Calibration

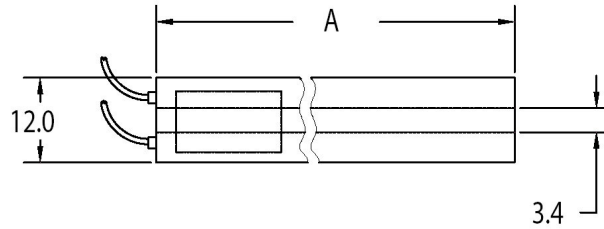
wiring



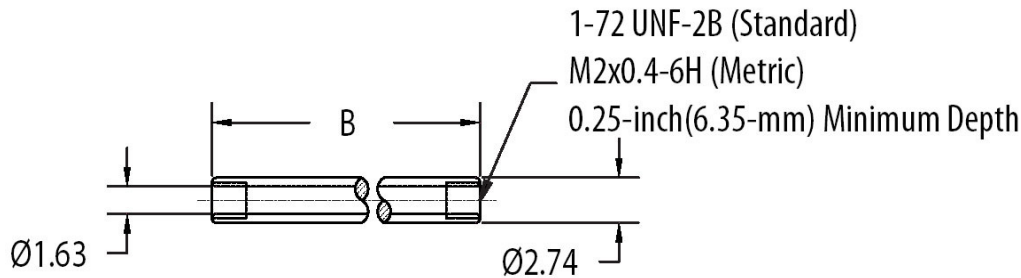
WIRING SCHEMATIC
(CONNECT GRN TO BLU FOR
DIFFERENTIAL OUTPUT)

M-12 Series LVDTs

dimensions



1. Leads are #26-AWG Teflon insulated, 1 meter long.



electrical specifications

Part Number	Unit	Stroke MM	Sensitivity ±5%	Phase Shift	Z-Input ±20%	Z-Output ±20%	Zero Phase NOM	A MM	B MM
02561036-000	M12-10	±10	42.00	+3 ± 3	570	540	3.9 KHZ	67.0	36.0
02561037-000	M12-20	±20	21.20	+2 ± 3	1100	400	3.9 KHZ	97.0	46.0
02561038-000	M12-30	±30	10.00	+2 ± 3	1540	600	3.8 KHZ	117.0	46.0
02561039-000	M12-50	±50	9.90	+3 ± 3	780	825	3.8 KHZ	155.0	46.0
02561040-000	M-12-100	±100	7.10	-3 ± 3	1000	1700	1.2 KHZ	285.0	75.0

The information in this sheet has been carefully reviewed and is believed to be accurate; however, no responsibility is assumed for inaccuracies. Furthermore, this information does not convey to the purchaser of such devices any license under the patent rights to the manufacturer. Measurement Specialties, Inc. reserves the right to make changes without further notice to any product herein. Measurement Specialties, Inc. makes no warranty, representation or guarantee regarding the suitability of its product for any particular purpose, nor does Measurement Specialties, Inc. assume any liability arising out of the application or use of any product or circuit and specifically disclaims any and all liability, including without limitation consequential or incidental damages. Typical parameters can and do vary in different applications. All operating parameters must be validated for each customer application by customer's technical experts. Measurement Specialties, Inc. does not convey any license under its patent rights nor the rights of others.